

# Primary Children's Hospital

Located in Salt Lake City, Utah, Primary Children's has been serving children, families and communities across the West for more than 90 years. Our free standing children's hospital is specifically designed and staffed to address the unique needs of children.

Our simple, yet powerful, philosophy of *The Child First and Always*® informs every decision we make, and how we care for patients and their families.

## ..... OVERVIEW .....

- ☁ Free-Standing Children's Hospital
- ☁ LEVEL 1 Pediatric Trauma Center
- ☁ 60 Medical and Surgical Pediatric Specialties and Subspecialties
- ☁ 3,000+ Physicians & Medical Staff Specializing in Pediatrics
- ☁ Part of Intermountain Healthcare, a not-for-profit Health Care System
- ☁ Pediatric Teaching Hospital for the University of Utah School of Medicine
- ☁ Dedicated Pediatric & Neonatal Medical Transport Teams



## NATIONALLY-RANKED



- Cancer
- Cardiology & Heart Surgery
- Diabetes & Endocrine Disorders
- Gastroenterology & GI Surgery
- Nephrology
- Neurology & Neurosurgery
- Orthopedics
- Urology



## CENTERS OF EXCELLENCE

While our hospital offers the entire range of pediatric specialty and subspecialties, we are recognized for outstanding care and serve the largest geographical areas with our centers of excellence.



### CANCER & BLOOD DISEASE

Our team achieves impressive outcomes treating leukemia, neuroblastoma, lymphoma, sarcoma, and all other forms of childhood cancer, blood disease, and bone marrow transplants.



### HEART

Provide complete care and treatment for complex congenital heart disease, fetal heart care, interventional cardiology, genetics, electrophysiology, VAD, heart transplants and more.



### NEUROLOGY & NEUROSURGERY

Experienced surgeons and physicians care for a range of neurological issues including spina bifida, epilepsy, movement disorders, rhizotomy, hydrocephalus, and more.



### ORTHOPEDICS

From the basic to most complex orthopedic care including fractures, sarcoma, scoliosis, sports injuries, hand surgery, musculoskeletal defects, and more.

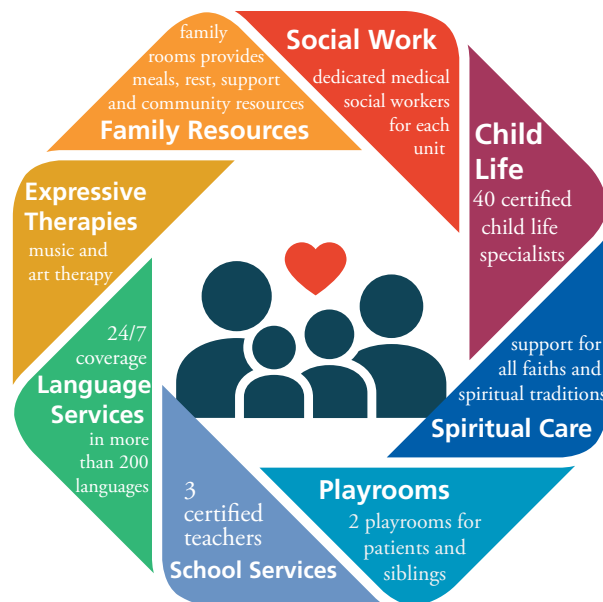


### TRANSPLANT

One of the most advanced heart, liver, and kidney transplant programs in the country, our team supports patients and families before, during, and after transplantation.

## FAMILY-CENTERED CARE

Family support services has a diverse team of physicians, therapists, specialists, and volunteers to engage patients and family members with therapeutic activities, positive distractions, and social support to promote physical, emotional, and spiritual healing.



© 2016 Intermountain Healthcare, Primary Children's Hospital, 801.662.6580 | Rev 07-19 | CT



**Intermountain®**  
Primary Children's Hospital

100 N. Mario Capecchi Dr.  
Salt Lake City, UT 84113  
(801) 662-1000

**Direct Admit: (801) 662-3648**